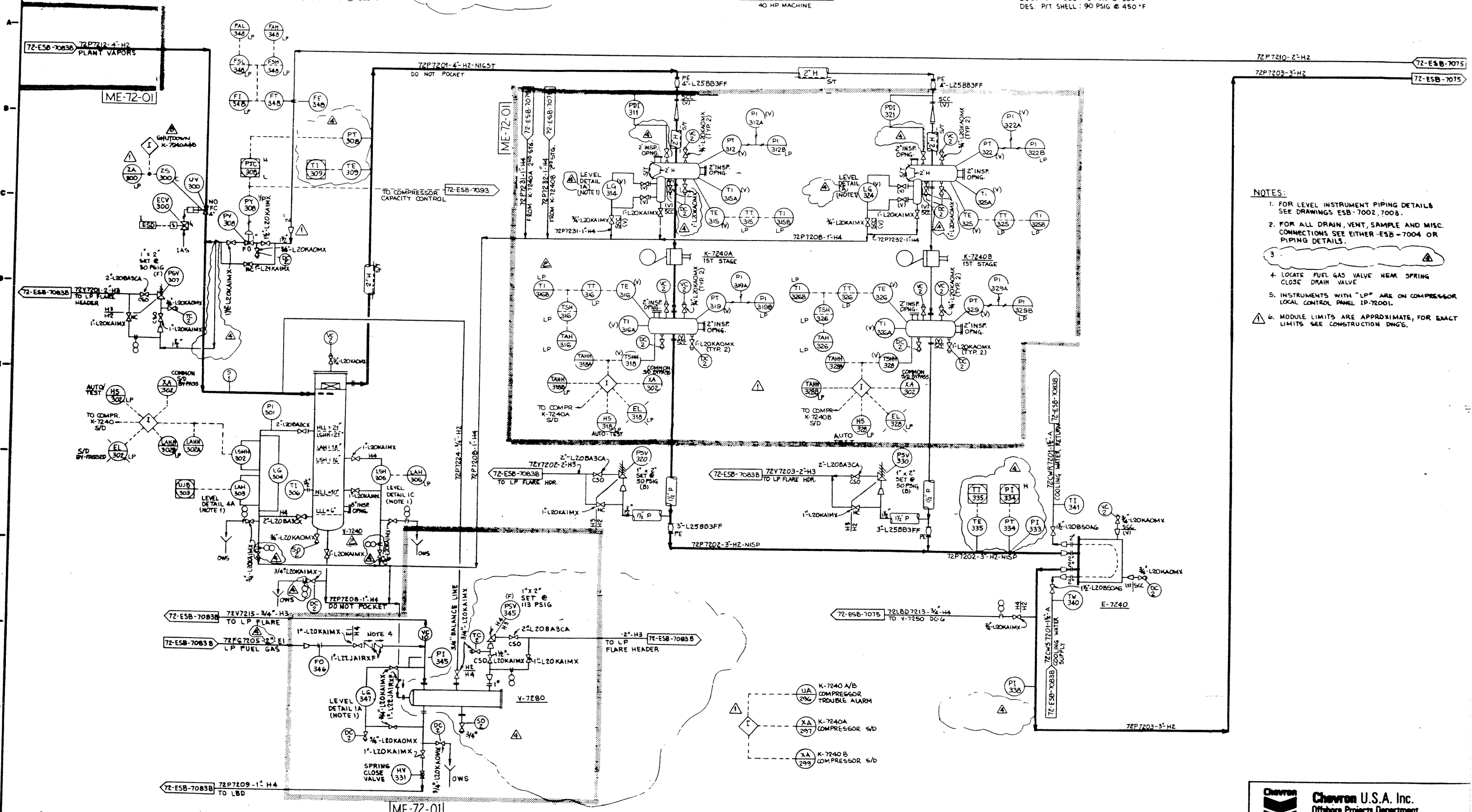


V-7240
VAPOR RECOVERY UNIT
SUCTION SCRUBBER
24" O.D. x 6'-0" S/F
DES. P/T: 30 PSIG @ 650°F

V-7280
VRU-BLOWCASE
16" O.D. x 6'-5" S/F
DES. P/T: 115 PSIG @ 650°F

K-7240 A & B
VAPOR RECOVERY UNIT
GAS COMPRESSORS
1ST STAGE CYLINDERS
40 HP MACHINE

E-7240
VAPOR RECOVERY UNIT
COMPR. INTERSTAGE COOLER
DES. P/T TUBE: 75 PSIG @ 300°F
DES. P/T SHELL: 90 PSIG @ 450°F



- NOTES:
1. FOR LEVEL INSTRUMENT PIPING DETAILS SEE DRAWINGS ESB-7002, 7008.
 2. FOR ALL DRAIN, VENT, SAMPLE AND MISC. CONNECTIONS SEE EITHER ESB-7004 OR PIPING DETAILS.
 - 3.
 4. LOCATE FUEL GAS VALVE NEAR SPRING CLOSE DRAIN VALVE.
 5. INSTRUMENTS WITH "LP" ARE ON COMPRESSOR LOCAL CONTROL PANEL IP-72001.
 6. MODULE LIMITS ARE APPROXIMATE, FOR EXACT LIMITS SEE CONSTRUCTION DWGS.

NO.	REVISIONS	DATE	BY	APP'D
1	REVISED COMPR. SHUTDOWN, MISC. REVISION	11/15/85	JAN/SLA	[Signature]
2	REVISED INSTRUMENT TAGS & VESSEL TAGS AS NOTED	7/1/86	[Signature]	[Signature]
3	ADD SHUTDOWN FOR K-7240	11/15/85	[Signature]	[Signature]
4	FINAL ISSUE	3/1/86	[Signature]	[Signature]

DATE	BY	APP'D	REVISION
11/15/85	JAN/SLA	[Signature]	1
7/1/86	[Signature]	[Signature]	2
11/15/85	[Signature]	[Signature]	3
3/1/86	[Signature]	[Signature]	4

ENGINEERING REVIEW	AUTHORIZED FOR RELEASE	CUSTOMER APPROVAL	DRAWING STATUS
DATE: 11/15/85	APPROVED BY: [Signature]	DATE: 11/15/85	ISSUE NO.:
CONTROL SYSTEMS: [Signature]	PROCESS ENGINEER: [Signature]		APPROVED DATE:
ELECTRICAL: [Signature]	PROJECT ENGINEER: [Signature]		DEVELOPMENT: [Signature]
MACHINERY: [Signature]			PRELIMINARY: [Signature]
MECHANICAL: [Signature]			ENGINEERING: [Signature]
PIPING: [Signature]			FINAL: [Signature]
PROC. ENGINEER: [Signature]			FOR CONSTRUCTION: [Signature]
STRUCTURAL: [Signature]			REVISIONS FOR CONSTRUCTION: [Signature]
CIVIL: [Signature]			REVISED FOR CONSTRUCTION: [Signature]

ANY PROCESS CONDITIONS OF SERVICE, SUCH AS TEMPERATURES, PRESSURES, FLOW QUANTITIES, STREAM COMPOSITIONS, AND EQUIPMENT DUTIES SHOWN ON THIS FLOW DIAGRAM ARE CALCULATED AND ARE FOR DESIGN PURPOSES ONLY. WHILE THEY MAY BE USEFUL AS GUIDES IN OPERATION, THEY DO NOT REPRESENT EXACT OR GUARANTEED OPERATING CONDITIONS.
GUARANTEES ARE CONTAINED ONLY IN THE CONTRACT (OR PROPOSAL) DOCUMENTS.

PIPING AND INSTRUMENTATION DIAGRAM	VRU 1ST STAGE COMPRESSION
PLANT 72	GAVIOTA GAS PLANT
SANTA BARBARA	CALIFORNIA
ORDER NO. C-27977	DRAWN BY: LUZ R. 11/15/84
CHEVRON Dwg. NO. 72-ESB-7074-4	REV. NO. [Signature]

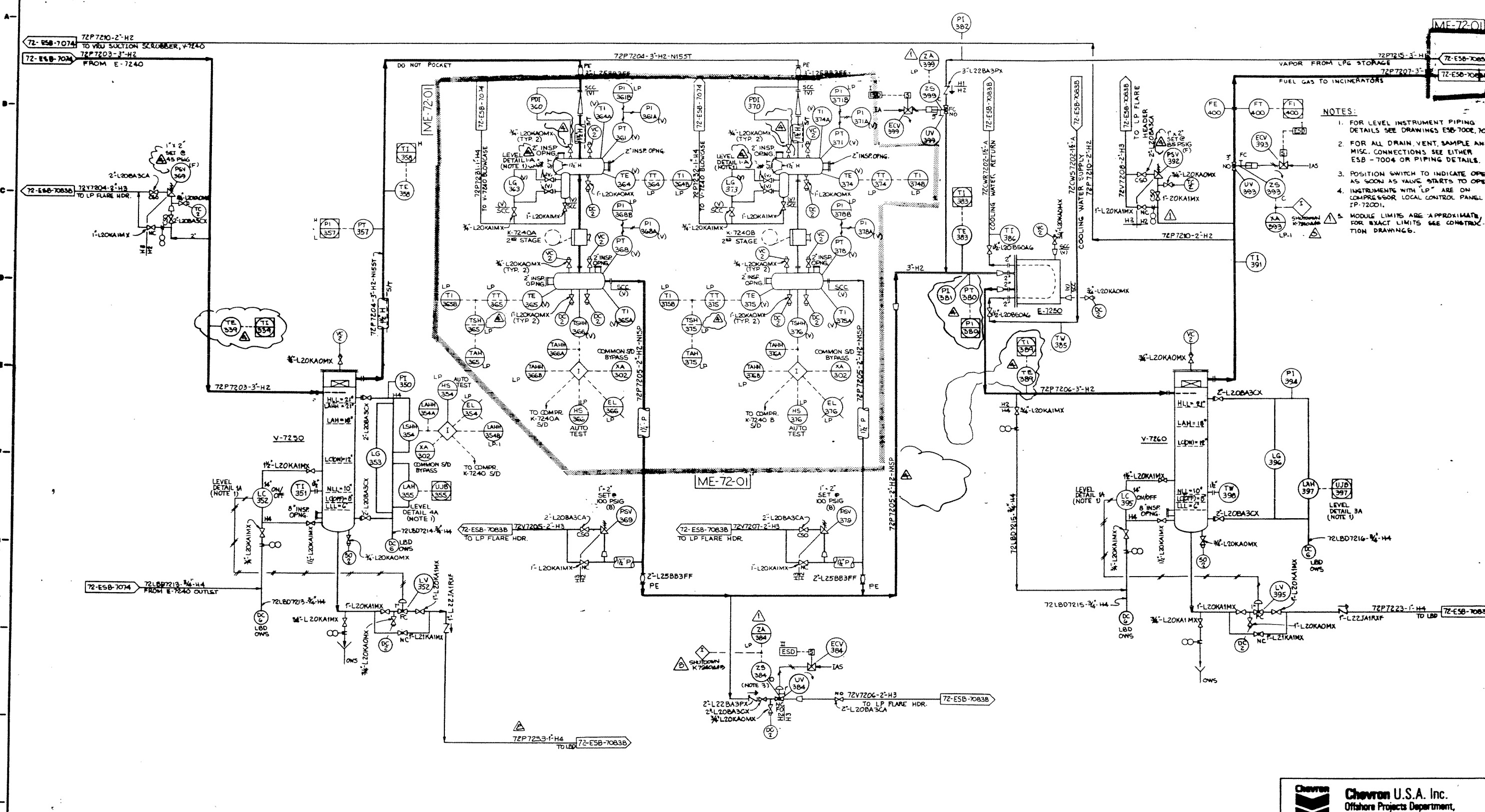
Steams Catalytic

V-7250
VAPOR RECOVERY UNIT
INTERSTAGE SCRUBBER
24" O.D. x 6'-0" S/F
DES. P/T 50 PSIG @ 650 °F

K-7240 A & B
VAPOR RECOVERY UNIT
GAS COMPRESSOR
2ND STAGE CYLINDER
40 HP MACHINE

E-7250
VAPOR RECOVERY UNIT
COMPRESSOR AFTERCOOLER
DES. P/T TUBE: 75 PSIG @ 300 °F
DES. P/T SHELL: 90 PSIG @ 450 °F

V-7260
VAPOR RECOVERY UNIT
AFTERSCRUBBER
24" O.D. x 6'-0" S/F
DES. P/T: 100 PSIG @ 650 °F



- NOTES:
1. FOR LEVEL INSTRUMENT PIPING DETAILS SEE DRAWINGS ESB-7000, 7003
 2. FOR ALL DRAIN, VENT, SAMPLE AND MISC. CONNECTIONS SEE EITHER ESB-7004 OR PIPING DETAILS.
 3. POSITION SWITCH TO INDICATE OPEN AS SOON AS VALVE STARTS TO OPEN.
 4. INSTRUMENTS WITH "LP" ARE ON COMPRESSOR LOCAL CONTROL PANEL IP-72001.
 5. MODULE LIMITS ARE APPROXIMATE, FOR EXACT LIMITS SEE CONSTRUCTION DRAWINGS.



REVISED AS NOTED		DATE		ENGINEERING REVIEW		AUTHORIZED FOR RELEASE		CUSTOMER APPROVAL		DRAWING STATUS	
REVISED LINE NUMBER	11/20/85	11/20/85	11/20/85	DATE	PROCESS ENGINEER	APPROVED BY	DATE	ISSUE NO.	APPROVED	DATE	PIPING AND INSTRUMENTATION DIAGRAM VRU 2ND STAGE COMPRESSION PLANT 72 GAVIOTA GAS PLANT SANTA BARBARA CALIFORNIA A CHEVRON DOC. NO. 72-ESB-7075-4
ADDED NO FOR K-7240 A & B	11/20/85	11/20/85	11/20/85	CONTROL SYSTEMS	PROJECT ENGINEER	DATE	PRELIMINARY ENGINEERING	8/1/85	11/20/85	ORDER NO. C-27977	
FINAL ISSUE	11/20/85	11/20/85	11/20/85	ELECTRICAL	PROJECT ENGINEER	DATE	FINAL ENGINEERING	8/1/85	11/20/85	DRAWN BY LUZ R.	
	11/20/85	11/20/85	11/20/85	MACHINERY			ISSUED APPROVED FOR CONSTRUCTION	8/1/85	11/20/85	11-16-84	
	11/20/85	11/20/85	11/20/85	MECHANICAL			REBID REVIEWED FOR CONSTRUCTION	8/1/85	11/20/85	11-16-84	
	11/20/85	11/20/85	11/20/85	PIPING			ISSUED APPROVED FOR CONSTRUCTION	8/1/85	11/20/85	11-16-84	
	11/20/85	11/20/85	11/20/85	PROC ENGINEER			ISSUED APPROVED FOR CONSTRUCTION	8/1/85	11/20/85	11-16-84	
	11/20/85	11/20/85	11/20/85	STRUCTURAL			ISSUED APPROVED FOR CONSTRUCTION	8/1/85	11/20/85	11-16-84	
	11/20/85	11/20/85	11/20/85	CIVIL			ISSUED APPROVED FOR CONSTRUCTION	8/1/85	11/20/85	11-16-84	