

BA-301
 FEED HEATER
 DESIGN DUTY: 5.23 MM BTU/HR
 CALENTADOR DE ALIMENTACION
 DISENADO PARA: 5.23 MM BTU/HR

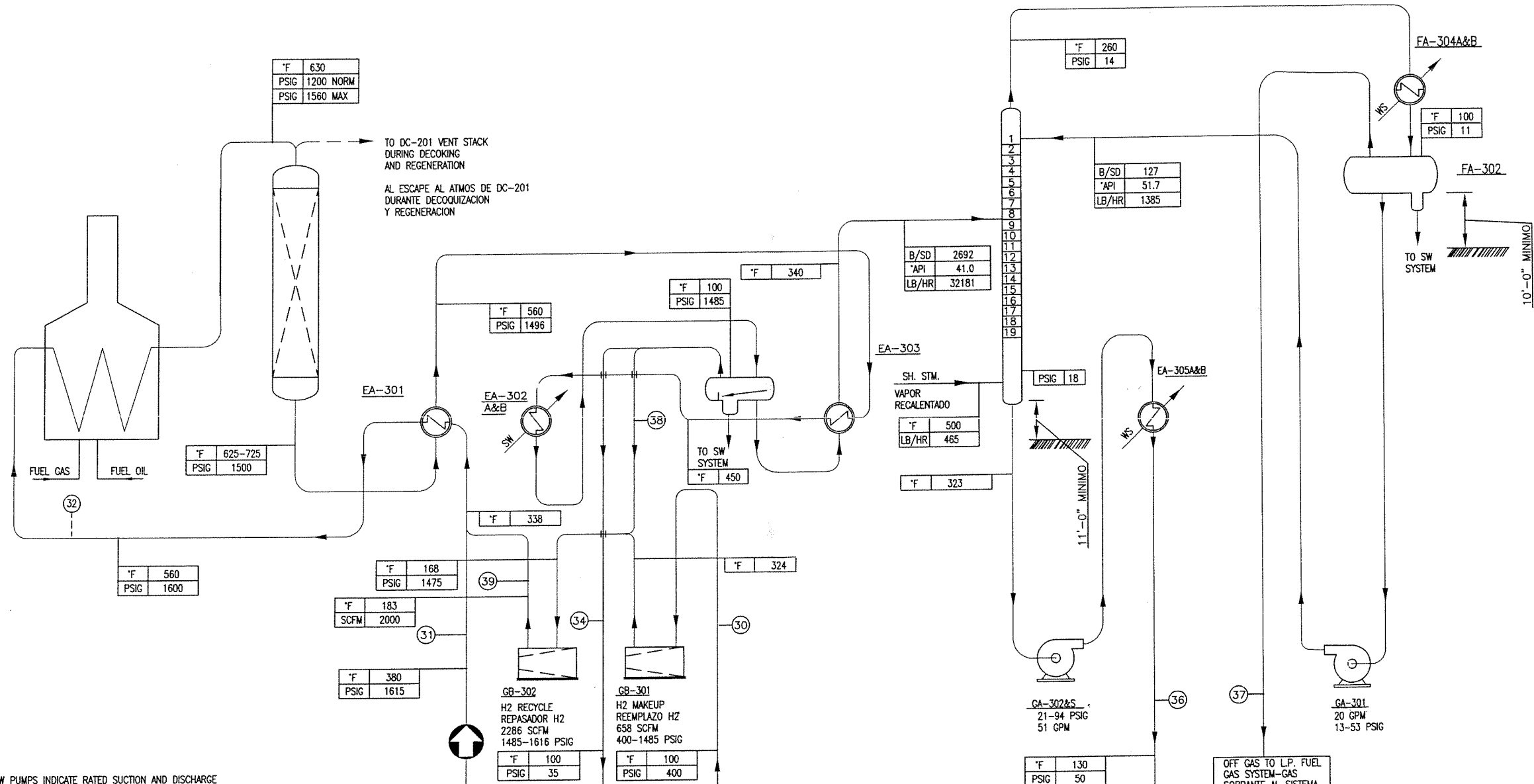
DC-301
 REACTOR
 4'-6" DIA, X 16'-0"

LIST OF CHANGES
 ISSUE F
 REV.
 1. REVISED PSIG & LB/HR AT FA-301 & DA-301
 2. REVISED TEMP AT DC-301
 3. REVISED MM BTU/HR AT BA-301

FA-301
 FLASH DRUM
 TAMBOR DE DESTELLO
 4'-6" DIA, X 13'-0"

DA-301
 KEROSENE STRIPPER
 DESPOJADOR DE KEROSINA
 2'-6" DIA, X 36'-9"

FA-302
 STRIPPER
 REFLUX ACCUMULATOR
 ACUMULADOR DESPOJADOR REFLUJO
 1'-6" DIA, X 5'-0"



NOTES:
 1. FIGURES BELOW PUMPS INDICATE RATED SUCTION AND DISCHARGE PRESSURES AND RATED CAPACITY AT OPERATING TEMPERATURE.
 2. VOLUMES AND GRAVITIES REFER TO CONDITIONS AT 60°F.
 3. BARRILES ARE BASED ON 42 U.S. GALLONS PER BARREL. DESIGN OF KEROSENE HYDROTREATER IS BASED ON OPERATION II OF CATALYTIC REFORMING UNIT. (90 OCTANE N. M.O.R.)

NOTAS:
 1. CIFRAS DEBAJO LAS BOMBAS FUA LA PRESION DE SUCCION Y DESCARGA Y LA CAPACIDAD NOMINAL A TEMPERATURA DE OPERACION.
 2. VOLUMENES Y GRAVEDADES SON A 60°F.
 3. BARRILES SON BASADOS EN 42 GALONES U.S. POR BARRIL.
 4. EL DISEÑO DEL HIDROTREATADOR DE KEROSINA ES BASADA EN OPERACION II DE LA UNIDAD REFORMADOR CATALITICA

KEROSENE FROM CRUDE UNIT KEROSINA DE LA UNIDAD DE PETROLEO CRUDO DIBUJO D-TS277-010A	
B/SD	2640
*API	39.7
LB/HR	31840

OFF GAS TO FUEL GAS DRUM-GAS SOBRENTE AL TAMBOR DE GAS COMBUSTIBLE DIBUJO D-TS277-016A	
SCFM	59
LB/HR	38
MOL/HR	10.95

HYDROGEN-RICH GAS FROM NAPHTHA HYDROTREATER GAS RICO EN HIDROGENO DEL HIDROTREATADOR DE NAFTA DIBUJO D-TS277-010B			
CASE	90 O.N. MOR	90 O.N. MOR	82 O.N. EOR
SCFM	576	589	627
LB/HR	380	323	595
MOL/HR	91.28	88.80	99.26


KEROSENE TO STORAGE KEROSINA AL ALMACENAJE DIBUJO D-TS277-010C	
B/SD	2651
*API	39.7
LB/HR	31934

OFF GAS TO L.P. FUEL GAS SYSTEM-GAS SOBRENTE AL SISTEMA DE GAS PRESION BAJA DIBUJO D-TS277-010A	
SCFM	140
MW	11.15
LB/HR	247
MOL/HR	22.16

LIST OF CHANGES
 REV. 2
 ISSUE E&F

1. ADDED STREAM No.39 TO DISCHARGE LINE OF GB-302.
 2. CHANGED PSIG AT FA-301.
 3. CHANGED LB/HR FOR S.H. STM. AT DA-301
 4. CHANGED °F TO 260 ON LINE FROM DA-301 TO EA-304
 5. CHANGED B/SD TO 127 AND NOTED LB/HR AS 1385 ON LINE FROM GA-301 TO DA-301.
 6. CHANGED DUTY TO 2.78 ON BA-301.
 7. CHANGED HEIGHT OF DA-301.

FOR ABBREVIATIONS SEE DWG. D-TS277-010A
 PARA ABBREVIACIONES VEA DIBUJO D-TS277-010A

REFINERIA 16,500 BARRILES POR DIA 16,500 BPOD REFINERY TEXAS PETROLEUM COMPANY	
ESCUINTLA,	GUATEMALA C.A.
ESCALA: SIN ESCALA	REVISO: ING CALDERON
FECHA: ENE 98	APROBO:
HECHO POR: GEOMETRICA	NOMBRE ARCHIVO: PFD-300
 PIPING AND INSTRUMENT FLOW DIAGRAM KEROSENE HYDROTREATER SECTION 300 HIDROTREATADOR KEROSINA SECCION 300 DIAGRAMA DE FLUJO TUBERIA E INSTRUMENTO	