

SCOPE OF CHANGE FOR THE 40,000 BPSD ASPHALT REVAMP

NOTES:
(FOR BEP APPROVAL - CDU #1)

- REMOVE 11-E-3 AND REPLACE WITH THE TWO SHELL 11-E-63. PROVIDE A TEMP. CONTROL BYPASS.
- MANIFOLD THE OUTLET LINES OF THE TWO PARALLEL EXCHANGERS (E-43, E-64) AND THEIR BYPASS.
- REMOVE A SECTION OF THE 6" VACUUM RESID. HEADER.

NOTES:
(FOR WWTP - SOURCE CONTROL)

- DELETED.
- DELETED.
- DELETED.
- REPLACE EXISTING CONTROLLER WITH AGAR ENERGY ABSORPTION PROBE.

1BB	06/15/95	FOR DESIGN (EXCLUDING "WHAT-IF" REVIEW COMMENTS) -CJ-10543	EJH	11	150
1AA	05/23/95	FOR BEP APPROVAL CDU#1(CJ-10486)			

1B	MAY 26, 95	WWTP SOURCE CONTROL (CJ-10594) ISSUE FOR DESIGN	J.P.	ME	RHL
1A	12/24/94	ISSUE FOR APPROVAL	R.S.	AS	RHL
REVISION	DATE	DESCRIPTION	DESIGNED BY	CHECKED BY	APPROVED BY

THIS P&ID SKETCH IS BASED ON PCP DRAWING No. 111-KE-2 SHT. 1 OF 4



TITLE PROCESS FLOW DIAGRAM PLANT NO. 1 CRUDE FRACTIONATION PREHEAT TRAIN		DEPARTMENT
AREA NO.	CLASS NO.	PROJECT NO. 10632/10543
DATE	SCALE	

DESIGNED BY J.P./R.S.	CHECKED BY R.S.	SECTION NO.	PAC. NO.	REV. 111-SK-2 SHEET 1 OF 4	DATE 1BB
--------------------------	--------------------	-------------	----------	----------------------------------	-------------

11-E-12
STRAIGHT RUN GASOLINE
COOLER

11-D-14
STABILIZER OVERHEAD
ACCUMULATOR
48" ID x 12'-0" T/T

11-E-42
STABILIZER FEED PREHEATER

11-C-3
STABILIZER COLUMN
36" ID x 6'-0" T/T

11-C-5
PREFLASH COLUMN
102" ID x 51'-0" T/T

12-E-1A/B
PREFLASH OVERHEAD
CONDENSER

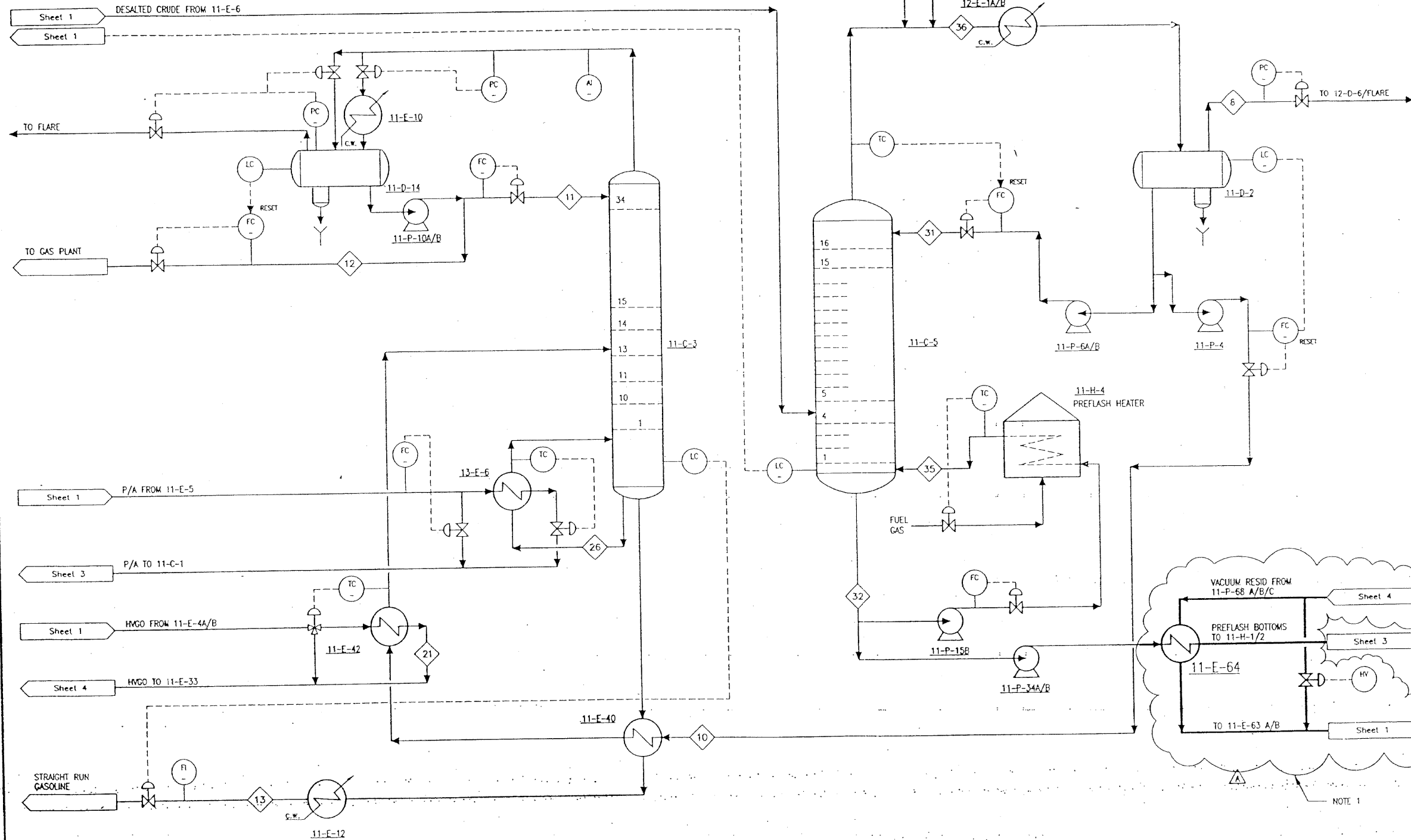
11-H-4
PREFLASH HEATER

11-D-2
PREFLASH OVERHEAD
ACCUMULATOR
72" ID x 20'-0" T/T

11-E-64
VACUUM RESID TO
PREFLASH BOTTOMS

SCOPE OF CHANGE FOR THE 40,000 BPSD
ASPHALT REVAMP

NOTE 1. - INSTALL A NEW ONE SHELL EXCHANGER, 11-E-64
IN THE PREFLASH BOTTOMS STREAM, UPSTREAM OF
THE ATMOSPHERIC HEATERS 11-H-1 AND 11-H-2
AND BYPASS.



Sheet 1
Sheet 1

Sheet 1

Sheet 3

Sheet 1

Sheet 4

STRAIGHT RUN
GASOLINE

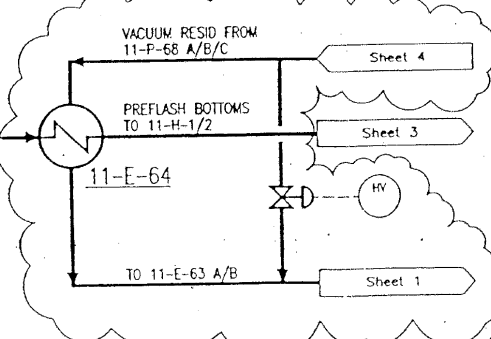
11-P-10A/B
STABILIZER COLUMN OVERHEAD PUMP

11-P-15B
PREFLASH REBOILER PUMP

11-P-4
STABILIZER COLUMN FEED PUMP

11-P-34A/B
PREFLASH BOTTOMS PUMP

11-P-6A/B
PREFLASH REFLUX PUMP



REVISION	DATE	DESCRIPTION	DRAWN BY	CHECKED BY	APP'D BY
B	JUNE 15/95	FOR DESIGN (EXCLUDING "WHAT-IF" REVIEW COMMENTS)-CJ-10543	BH	PEJ	SK
A	APRIL 5/95	FOR BEP APPROVAL-CDV/1 (CJ-10486)	PKR		

THIS P&ID SKETCH IS
BASED ON PCP DRAWING No.
111-KE-2 SHT. 2 OF 4

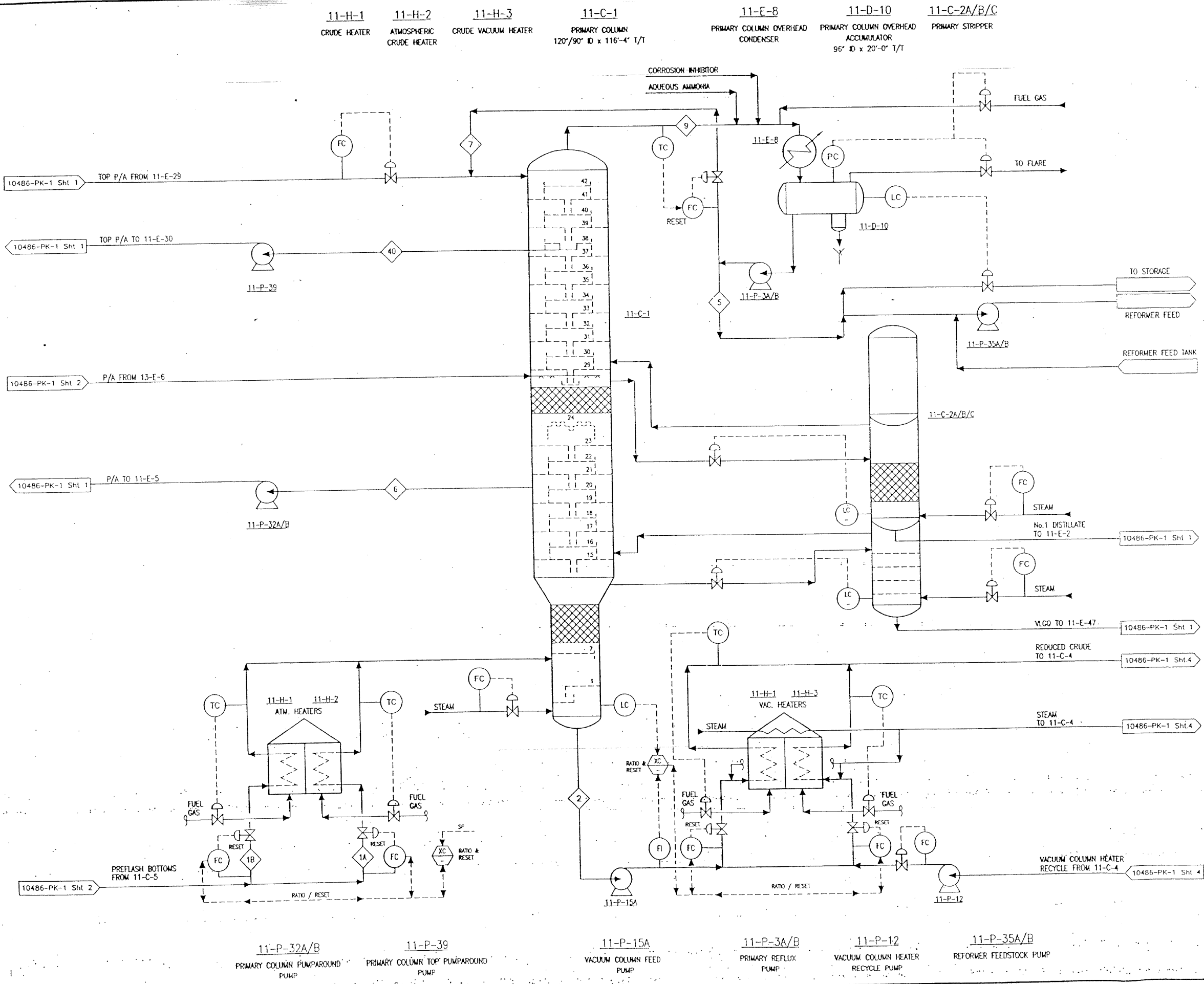


TITLE: PROCESS FLOW DIAGRAM
PLANT NO. 1
CRUDE FRACTIONATION
PREFLASH & STABILIZER

AREA NO.
CLASS NO.
PROJ. NO. 10543.0002
DATE
SCALE

DRAWN BY: J.P./R.S.
CHECKED BY: [blank]
SECTION NO.
PVC NO.
NOV. B

111-SK-2
SHEET 2 OF 4



REVISION	DATE	DESCRIPTION	DRAWN BY	CHECKED BY	APP'D BY
B	JUNE 15/95	FOR DESIGN (EXCLUDING "WHAT-IF" REVIEW COMMENTS)-CJ-10543			J.P.R.
A	APR 19/95	FOR BEP APPROVAL-COUJ1(CJ-10486)			J.P.R.

THIS P&ID SKETCH IS
 BASED ON PCP DRAWING No.
 111-KE-2 SHT. 3 OF 4



TITLE		DEPARTMENT	
PROCESS FLOW DIAGRAM		AREA NO.	
PLANT NO.1		CLASS NO.	
CRUDE FRACTIONATION		PROJ. NO. 10543.0002	
PRIMARY COLUMN		DATE	
		SCALE	
DRAWN BY	CHECKED BY	SECTION NO.	REV. NO.
J.P./R.S.	CHECKED ENGINEER		111-SK-2
		APPROVED BY	SHEET 3 OF 4
			B